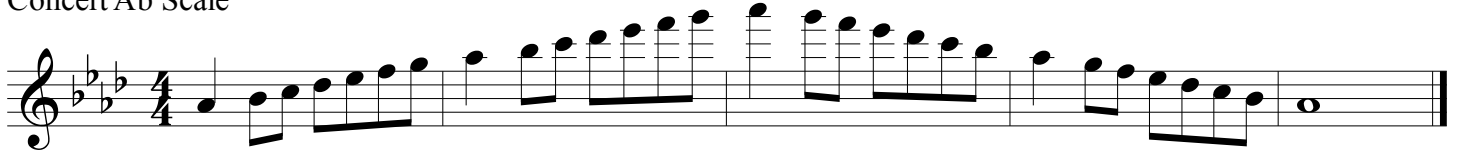


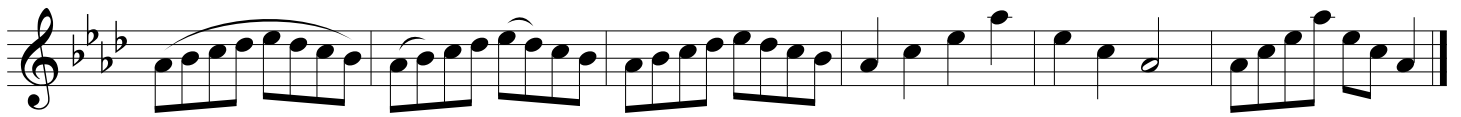
FLUTE

Technical Development Concert Ab Exercises

Concert Ab Scale



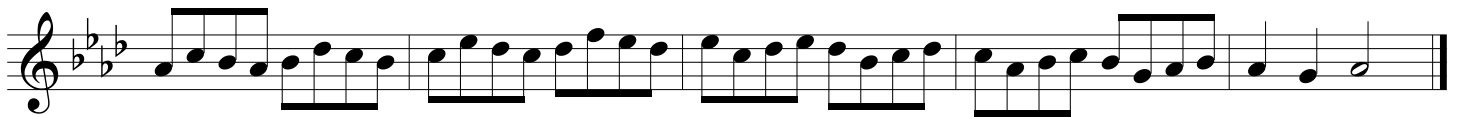
Concert Ab Mini Scale and Arpeggio



Concert Ab Scale Pattern 1



Concert Ab Scale Pattern 2



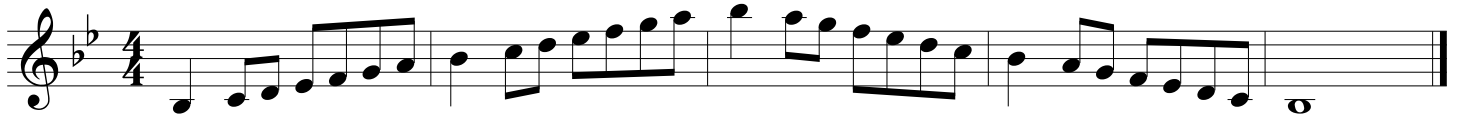
Concert Ab Interval Study



CLARINET

Technical Development Concert Ab Exercises

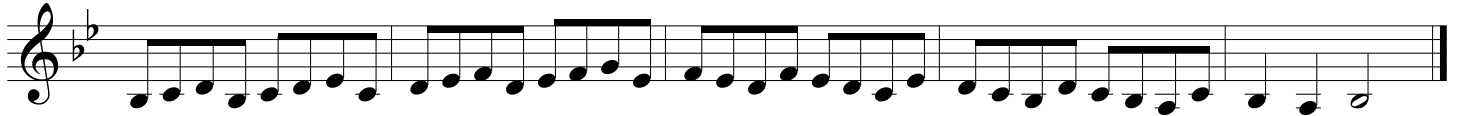
Concert Ab Scale



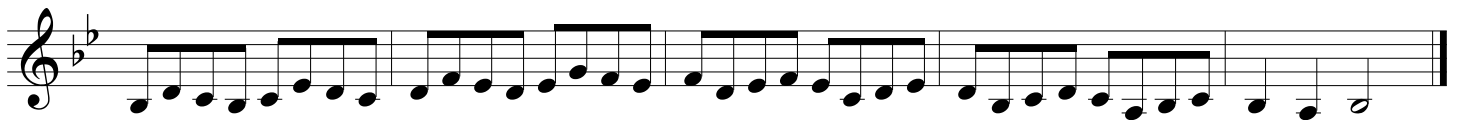
Concert Ab Mini Scale and Arpeggio



Concert Ab Scale Pattern 1



Concert Ab Scale Pattern 2



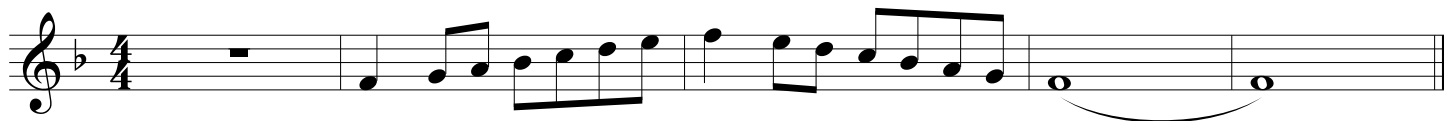
Concert Ab Interval Study



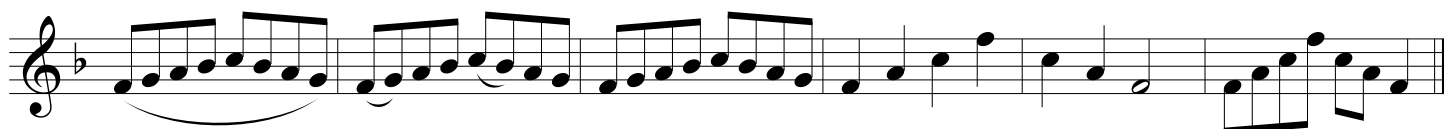
ALTO SAXOPHONE

Technical Development Concert Ab Exercises

Concert Ab Scale



Concert Ab Mini Scale and Arpeggio



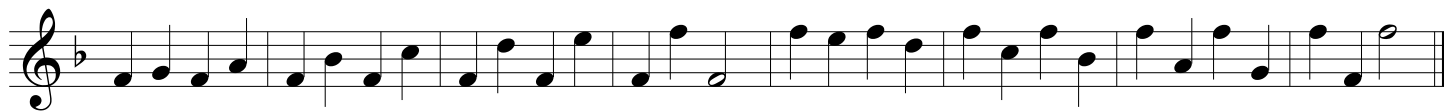
Concert Ab Scale Pattern 1



Concert Ab Scale Pattern 2



Concert Ab Interval Study



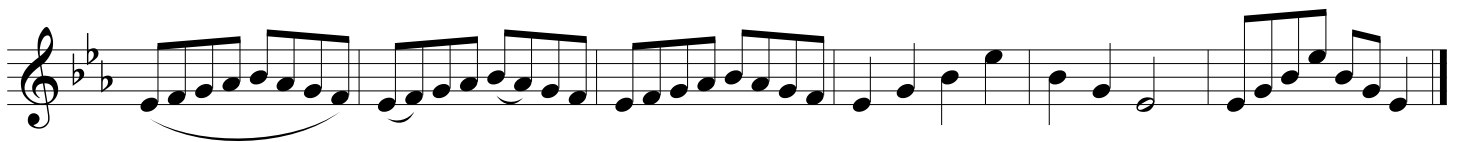
HORN

Technical Development Concert Ab Exercises

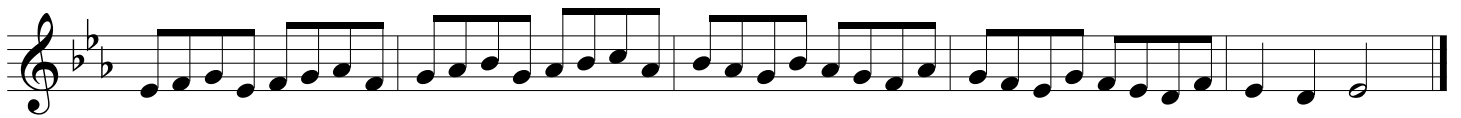
Concert Ab Scale



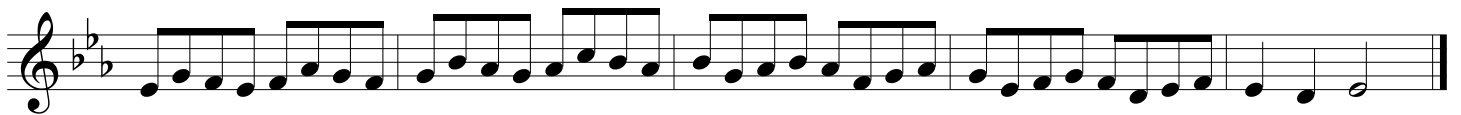
Concert Ab Mini Scale and Arpeggio



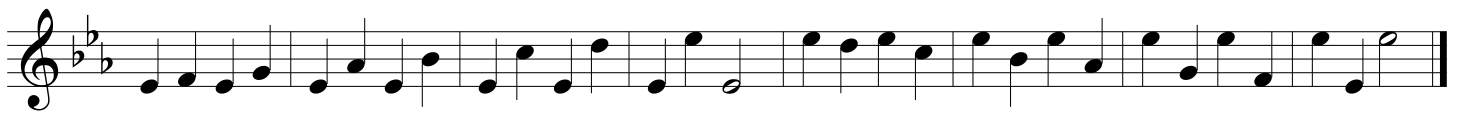
Concert Ab Scale Pattern 1



Concert Ab Scale Pattern 2



Concert Ab Interval Study



TUBA

Technical Development Concert Ab Exercises

Concert Ab Scale

Musical notation for the Concert Ab Scale in bass clef, 4/4 time. The scale starts with a whole rest in the first measure, followed by an ascending eighth-note scale from G2 to G3. The final two notes, G2 and G3, are held together with a slur and a fermata.

Concert Ab Mini Scale and Arpeggio

Musical notation for the Concert Ab Mini Scale and Arpeggio in bass clef. It consists of a single line of music with eighth-note patterns. The first three measures are ascending eighth-note runs. The fourth measure is a descending eighth-note run. The fifth measure is a descending eighth-note arpeggio. The sixth measure is an ascending eighth-note run.

Concert Ab Scale Pattern 1

Musical notation for Concert Ab Scale Pattern 1 in bass clef. It consists of a single line of music with eighth-note patterns. The first four measures are ascending eighth-note runs. The fifth measure is a descending eighth-note run. The sixth measure is a descending eighth-note arpeggio. The seventh measure is an ascending eighth-note run.

Concert Ab Scale Pattern 2

Musical notation for Concert Ab Scale Pattern 2 in bass clef. It consists of a single line of music with eighth-note patterns. The first four measures are ascending eighth-note runs. The fifth measure is a descending eighth-note run. The sixth measure is a descending eighth-note arpeggio. The seventh measure is an ascending eighth-note run.

Concert Ab Interval Study

Musical notation for Concert Ab Interval Study in bass clef. It consists of a single line of music with eighth-note patterns. The first four measures are ascending eighth-note runs. The fifth measure is a descending eighth-note run. The sixth measure is a descending eighth-note arpeggio. The seventh measure is an ascending eighth-note run.