

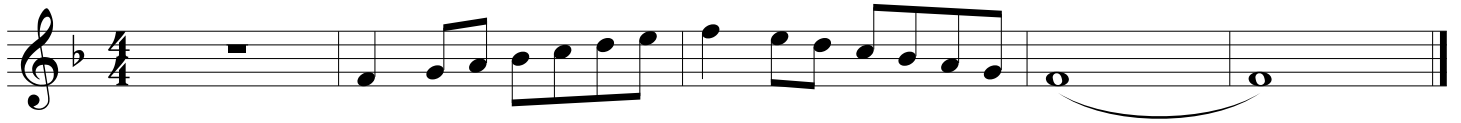


OBOE

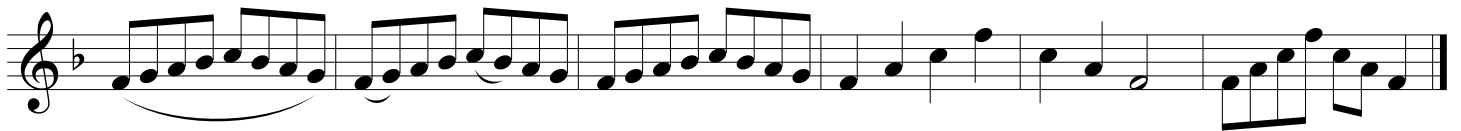
# Technical Development

## Concert F Exercises

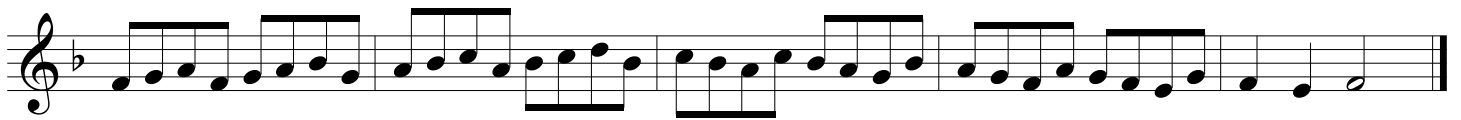
Concert F Scale



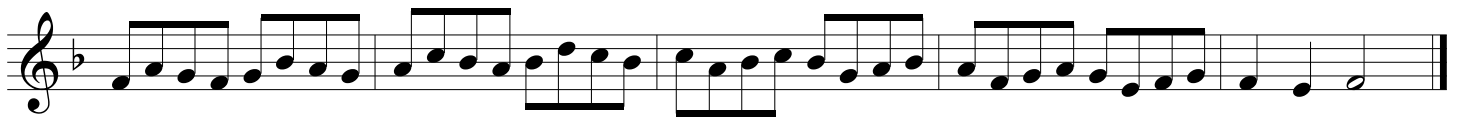
Concert F Mini Scale and Arpeggio



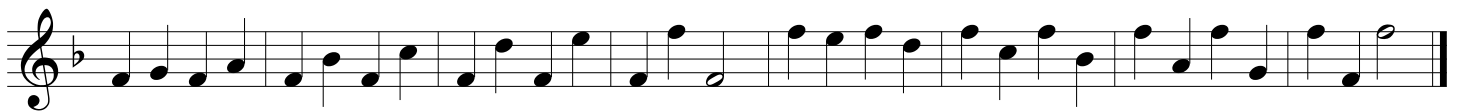
Concert F Scale Pattern 1



Concert F Scale Pattern 2



Concert F Interval Study



CLARINET

# Technical Development

## Concert F Exercises

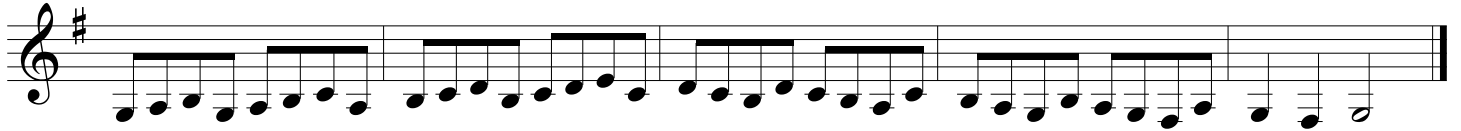
Concert F Scale



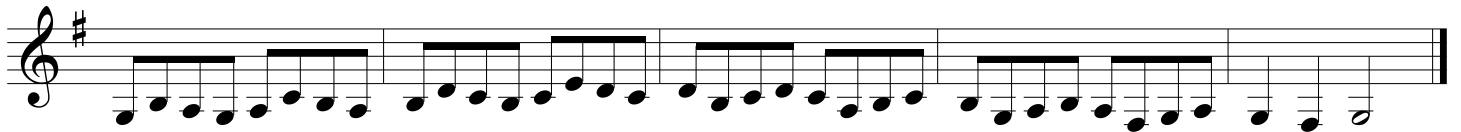
Concert F Mini Scale and Arpeggio



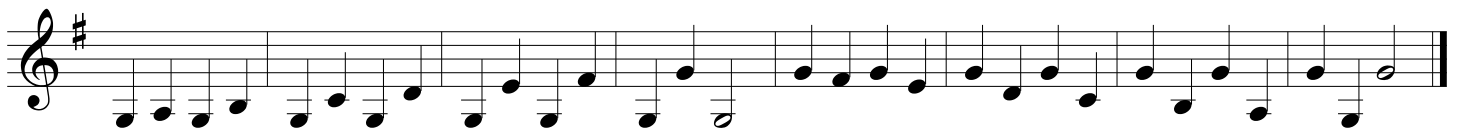
Concert F Scale Pattern 1



Concert F Scale Pattern 2



Concert F Interval Study





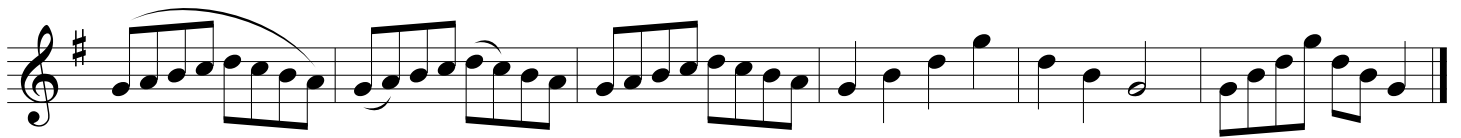
TENOR SAX

# Technical Development Concert F Exercises

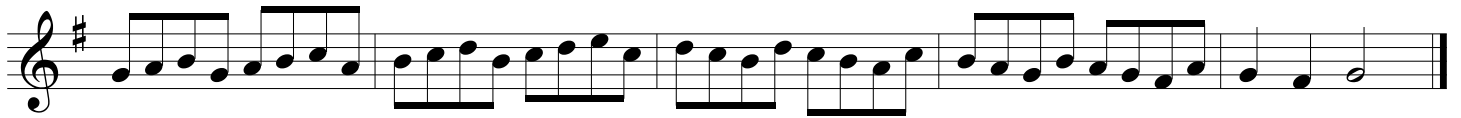
Concert F Scale



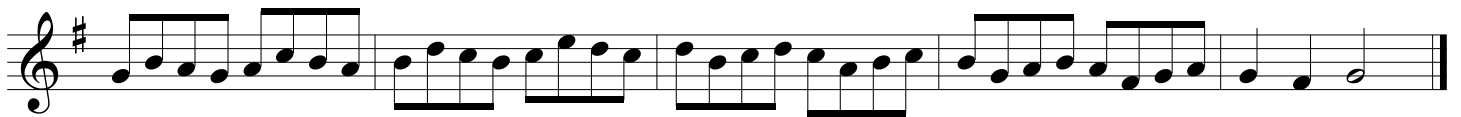
Concert F Mini Scale and Arpeggio



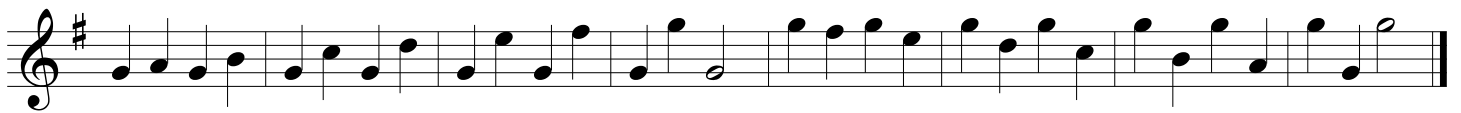
Concert F Scale Pattern 1



Concert F Scale Pattern 2



Concert F Interval Study



HORN

# Technical Development

## Concert F Exercises

Concert F Scale



Concert F Mini Scale and Arpeggio



Concert F Scale Pattern 1



Concert F Scale Pattern 2



Concert F Interval Study





TROMBONE/EUPHONIUM

# Technical Development

## Concert F Exercises

Concert F Scale

Musical notation for the Concert F Scale in bass clef, 4/4 time. The scale is written in F major (one flat). It consists of 12 measures: measures 1-4 are the ascending scale, measures 5-8 are the descending scale, and measures 9-12 are the ascending scale with a final whole note F.

Concert F Mini Scale and Arpeggio

Musical notation for the Concert F Mini Scale and Arpeggio in bass clef, 4/4 time. It consists of 12 measures: measures 1-4 are the ascending mini scale (quarter notes), measures 5-8 are the descending mini scale (quarter notes), and measures 9-12 are the ascending arpeggio (quarter notes).

Concert F Scale Pattern 1

Musical notation for Concert F Scale Pattern 1 in bass clef, 4/4 time. It consists of 12 measures of eighth-note patterns: measures 1-4 are ascending eighth notes, measures 5-8 are descending eighth notes, and measures 9-12 are ascending eighth notes.

Concert F Scale Pattern 2

Musical notation for Concert F Scale Pattern 2 in bass clef, 4/4 time. It consists of 12 measures of eighth-note patterns: measures 1-4 are ascending eighth notes, measures 5-8 are descending eighth notes, and measures 9-12 are ascending eighth notes.

Concert F Interval Study

Musical notation for Concert F Interval Study in bass clef, 4/4 time. It consists of 12 measures of interval exercises: measures 1-4 are ascending intervals (quarter notes), measures 5-8 are descending intervals (quarter notes), and measures 9-12 are ascending intervals (quarter notes).

TUBA

# Technical Development Concert F Exercises

Concert F Scale

Musical notation for the Concert F Scale in bass clef, 4/4 time. The scale is written in F major (one flat). It consists of two measures: the first measure contains the ascending scale from F2 to F3, and the second measure contains the descending scale from F3 to F2. The notes are: F2, G2, A2, B2, C3, D3, E3, F3, G3, A3, B3, C4, B3, A3, G3, F3.

Concert F Mini Scale and Arpeggio

Musical notation for the Concert F Mini Scale and Arpeggio in bass clef, 4/4 time. The first measure contains an ascending mini scale from F2 to C3. The second measure contains a descending mini scale from C3 to F2. The third measure contains an ascending arpeggio from F2 to C3. The fourth measure contains a descending arpeggio from C3 to F2. The notes are: F2, G2, A2, B2, C3, B2, A2, G2, F2, G2, A2, B2, C3, B2, A2, G2, F2.

Concert F Scale Pattern 1

Musical notation for Concert F Scale Pattern 1 in bass clef, 4/4 time. The pattern consists of four measures of eighth-note runs. The first measure is an ascending eighth-note scale from F2 to C3. The second measure is a descending eighth-note scale from C3 to F2. The third measure is an ascending eighth-note scale from F2 to C3. The fourth measure is a descending eighth-note scale from C3 to F2. The notes are: F2, G2, A2, B2, C3, B2, A2, G2, F2, G2, A2, B2, C3, B2, A2, G2, F2.

Concert F Scale Pattern 2

Musical notation for Concert F Scale Pattern 2 in bass clef, 4/4 time. The pattern consists of four measures of eighth-note runs. The first measure is an ascending eighth-note scale from F2 to C3. The second measure is a descending eighth-note scale from C3 to F2. The third measure is an ascending eighth-note scale from F2 to C3. The fourth measure is a descending eighth-note scale from C3 to F2. The notes are: F2, G2, A2, B2, C3, B2, A2, G2, F2, G2, A2, B2, C3, B2, A2, G2, F2.

Concert F Interval Study

Musical notation for Concert F Interval Study in bass clef, 4/4 time. The study consists of two measures. The first measure contains a sequence of intervals starting from F2: F2-G2, G2-A2, A2-B2, B2-C3, C3-D3, D3-E3, E3-F3, F3-G3, G3-A3, A3-B3, B3-C4, C4-B3, B3-A3, A3-G3, G3-F3. The second measure contains a sequence of intervals starting from F2: F2-G2, G2-A2, A2-B2, B2-C3, C3-D3, D3-E3, E3-F3, F3-G3, G3-A3, A3-B3, B3-C4, C4-B3, B3-A3, A3-G3, G3-F3.