

FLUTE

# Ensemble Development

## Concert F

Musical notation for Concert F, featuring a single staff with a treble clef and a 4/4 time signature. The melody consists of five measures: a whole note F4, a whole rest, a whole note F4, a whole rest, and a whole note F4.

## Long Tone 1A

Musical notation for Long Tone 1A, featuring a single staff with a treble clef. The melody consists of eight measures: quarter notes G4, A4, B4, C5, quarter rests, quarter notes B4, A4, G4, quarter rests.

Musical notation for Long Tone 1A continuation, featuring a single staff with a treble clef. The melody consists of seven measures: quarter notes F4, E4, D4, quarter rests, quarter notes C4, B3, A3, quarter rests.

## Long Tone 1C

Musical notation for Long Tone 1C, featuring a single staff with a treble clef. The melody consists of ten measures: quarter notes G4, A4, B4, C5, quarter rests, quarter notes B4, A4, G4, quarter rests, quarter notes F4, E4, D4, quarter rests.

## Warm Up Set 1

Musical notation for Warm Up Set 1, featuring a single staff with a treble clef. The melody consists of eight measures: quarter notes G4, A4, B4, C5, quarter notes D5, E5, F5, G5, quarter rests, quarter notes F5, E5, D5, quarter notes C5, B4, A4, G4.

Musical notation for Warm Up Set 1 continuation, featuring a single staff with a treble clef. The melody consists of seven measures: quarter notes G4, A4, B4, C5, quarter notes D5, E5, F5, G5, quarter notes F5, E5, D5, quarter notes C5, B4, A4, G4.

## Chorale

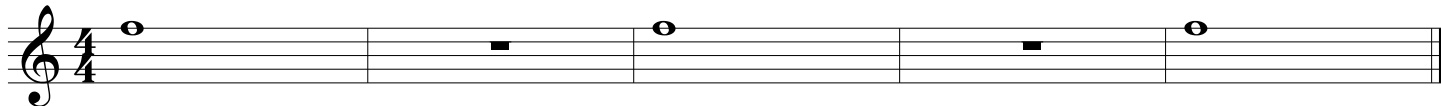
Musical notation for Chorale, featuring a single staff with a treble clef and a key signature of one flat. The melody consists of eight measures: quarter notes G4, A4, B4, C5, quarter notes D5, E5, F5, G5, quarter notes F5, E5, D5, quarter notes C5, B4, A4, G4.

Musical notation for Chorale continuation, featuring a single staff with a treble clef and a key signature of one flat. The melody consists of five measures: quarter notes G4, A4, B4, C5, quarter notes D5, E5, F5, G5, quarter notes F5, E5, D5, quarter notes C5, B4, A4, G4.

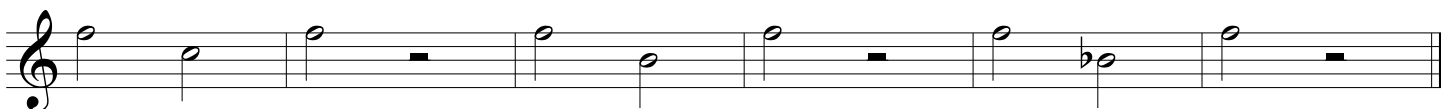
OBOE

# Ensemble Development

Concert F



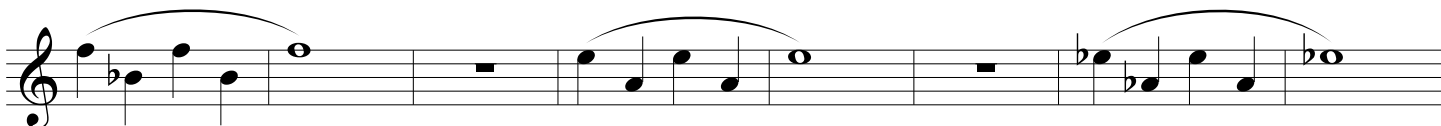
Long Tone 1A



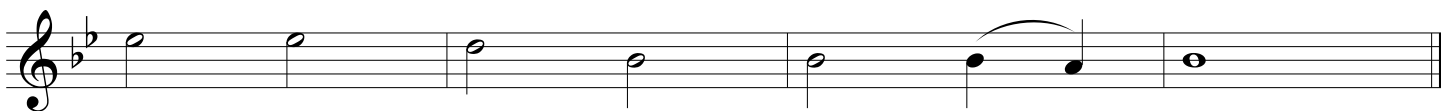
Long Tone 1C



Warm Up Set 1



Chorale





CLARINET 2

# Ensemble Development

Concert F

Musical notation for Concert F, featuring a treble clef, a 4/4 time signature, and a single whole note on the F line.

Long Tone 1A

Musical notation for Long Tone 1A, featuring a treble clef and a sequence of eighth notes: F4, G4, A4, B4, C5, B4, A4, G4, F4.

Musical notation for Long Tone 1A continuation, featuring a treble clef and a sequence of eighth notes: E4, D4, C4, B3, A3, G3, F3, E3.

Long Tone 1C

Musical notation for Long Tone 1C, featuring a treble clef and a sequence of eighth notes: F4, G4, A4, B4, C5, B4, A4, G4, F4, E4, D4, C4, B3, A3, G3, F3, E3.

Warm Up Set 1

Musical notation for Warm Up Set 1, first line, featuring a treble clef and eighth notes with slurs: F4, G4, A4, B4, C5, B4, A4, G4, F4, E4, D4, C4, B3, A3, G3, F3, E3.

Musical notation for Warm Up Set 1, second line, featuring a treble clef and eighth notes with slurs: F4, G4, A4, B4, C5, B4, A4, G4, F4, E4, D4, C4, B3, A3, G3, F3, E3.

Chorale

Musical notation for Chorale, first line, featuring a treble clef and a sequence of eighth notes: F4, G4, A4, B4, C5, B4, A4, G4, F4, E4, D4, C4, B3, A3, G3, F3, E3.

Musical notation for Chorale, second line, featuring a treble clef and a sequence of eighth notes: F4, G4, A4, B4, C5, B4, A4, G4, F4, E4, D4, C4, B3, A3, G3, F3, E3.

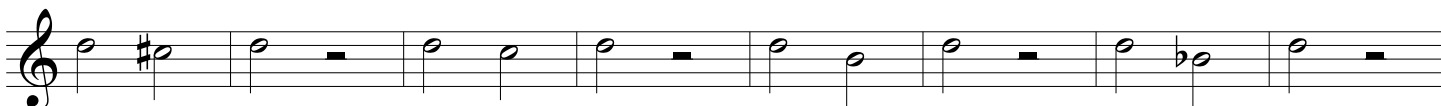
ALTO SAX

# Ensemble Development

Concert F



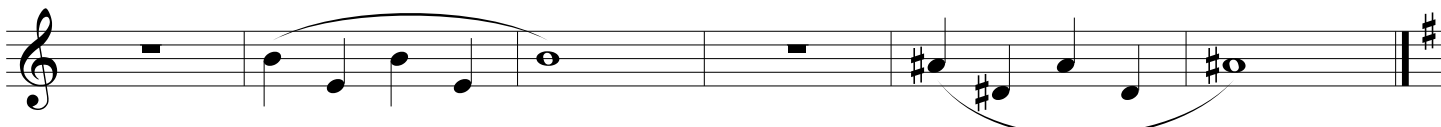
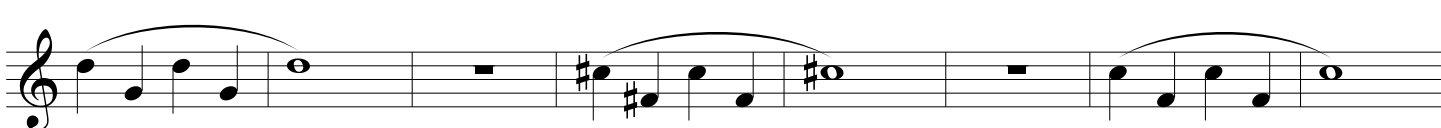
Long Tone 1A



Long Tone 1C



Warm Up Set 1



Chorale



TENOR SAX

# Ensemble Development

Concert F

Musical notation for Concert F, consisting of a single staff in 4/4 time. The melody begins with a whole note F4, followed by a whole rest, then a whole note F4, another whole rest, and finally a whole note F4.

Long Tone 1A

Musical notation for Long Tone 1A, consisting of a single staff in 4/4 time. The melody starts with a whole note F4, followed by a whole rest, then a whole note G4, a whole rest, a whole note A4, a whole rest, a whole note B4, a whole rest, a whole note C5, a whole rest, a whole note B4, a whole rest, a whole note A4, a whole rest, a whole note G4, a whole rest, and a whole note F4.

Musical notation for Long Tone 1A continuation, consisting of a single staff in 4/4 time. The melody starts with a whole note E4, a whole rest, a whole note D4, a whole rest, a whole note C4, a whole rest, a whole note B3, a whole rest, a whole note A3, a whole rest, and a whole note G3.

Long Tone 1C

Musical notation for Long Tone 1C, consisting of a single staff in 4/4 time. The melody starts with a whole note F4, followed by a whole rest, then a whole note G4, a whole rest, a whole note A4, a whole rest, a whole note B4, a whole rest, a whole note C5, a whole rest, a whole note B4, a whole rest, a whole note A4, a whole rest, a whole note G4, a whole rest, and a whole note F4.

Warm Up Set 1

Musical notation for Warm Up Set 1, first line, consisting of a single staff in 4/4 time. The melody starts with a whole note F4, followed by a whole rest, then a whole note G4, a whole rest, a whole note A4, a whole rest, a whole note B4, a whole rest, a whole note C5, a whole rest, a whole note B4, a whole rest, a whole note A4, a whole rest, a whole note G4, a whole rest, and a whole note F4.

Musical notation for Warm Up Set 1, second line, consisting of a single staff in 4/4 time. The melody starts with a whole note E4, a whole rest, a whole note D4, a whole rest, a whole note C4, a whole rest, a whole note B3, a whole rest, a whole note A3, a whole rest, a whole note G3, a whole rest, and a whole note F3.

Chorale

Musical notation for Chorale, first line, consisting of a single staff in 4/4 time. The melody starts with a whole note F4, followed by a whole note G4, a whole note A4, a whole note B4, a whole note C5, a whole note B4, a whole note A4, a whole note G4, and a whole note F4.

Musical notation for Chorale, second line, consisting of a single staff in 4/4 time. The melody starts with a whole note E4, followed by a whole note D4, a whole note C4, a whole note B3, a whole note A3, a whole note G3, and a whole note F3.

HORN

# Ensemble Development

Concert F

A single musical staff in 4/4 time, starting with a treble clef and a key signature of one flat (B-flat). The staff contains four measures of music, each beginning with a whole rest followed by a half note: F2, B-flat2, F2, and B-flat2. The piece concludes with a double bar line.

Long Tone 1A

A musical staff in 4/4 time with a treble clef and one flat key signature. It contains eight measures of music. The notes are: F2, G2, A2, B-flat2, A2, G2, F2, and G2. The first four notes are beamed together, and the last four are also beamed together. There are whole rests in the second, fourth, sixth, and eighth measures.

A musical staff in 4/4 time with a treble clef and one flat key signature. It contains eight measures of music. The notes are: F2, G2, A2, B-flat2, A2, G2, F2, and G2. The first four notes are beamed together, and the last four are also beamed together. There are whole rests in the second, fourth, sixth, and eighth measures.

Long Tone 1C

A musical staff in 4/4 time with a treble clef and one flat key signature. It contains eight measures of music. The notes are: F2, G2, A2, B-flat2, A2, G2, F2, and G2. The first four notes are beamed together, and the last four are also beamed together. There are whole rests in the second, fourth, sixth, and eighth measures.

Warm Up Set 1

A musical staff in 4/4 time with a treble clef and one flat key signature. It contains eight measures of music. The notes are: F2, G2, A2, B-flat2, A2, G2, F2, and G2. The first four notes are beamed together and labeled 'T0'. There is a whole rest in the second measure. The next four notes are beamed together and labeled 'T1'. There is a whole rest in the sixth measure.

A musical staff in 4/4 time with a treble clef and one flat key signature. It contains eight measures of music. The notes are: F2, G2, A2, B-flat2, A2, G2, F2, and G2. The first four notes are beamed together and labeled 'T12'. There is a whole rest in the second measure. The next four notes are beamed together and labeled 'T23'. There is a whole rest in the sixth measure.

Chorale

A musical staff in 4/4 time with a treble clef and one flat key signature. It contains four measures of music. The notes are: F2, G2, A2, B-flat2, A2, G2, F2, and G2. The notes are beamed in pairs: (F2, G2), (A2, B-flat2), (A2, G2), and (F2, G2).

A musical staff in 4/4 time with a treble clef and one flat key signature. It contains four measures of music. The notes are: F2, G2, A2, B-flat2, A2, G2, F2, and G2. The notes are beamed in pairs: (F2, G2), (A2, B-flat2), (A2, G2), and (F2, G2).



TROMBONE

# Ensemble Development

## Concert F

A single musical staff in bass clef with a 4/4 time signature. It contains five measures: a whole note F, a whole rest, a whole note F, a whole rest, and a whole note F. The staff ends with a double bar line.

## Long Tone 1A

A musical staff in bass clef with a 4/4 time signature. It contains eight measures of eighth notes: F, G, A, B, C, D, E, F. There are whole rests in the second, fourth, sixth, and eighth measures. The staff ends with a double bar line.

A musical staff in bass clef with a 4/4 time signature. It contains seven measures of eighth notes: G, A, B, C, D, E, F. There are whole rests in the second, fourth, and sixth measures. The staff ends with a double bar line.

## Long Tone 1C

A musical staff in bass clef with a 4/4 time signature. It contains ten measures of eighth notes: F, G, A, B, C, D, E, F, G, A. There are whole rests in the second, fourth, sixth, and eighth measures. The staff ends with a double bar line.

## Warm Up Set 1

A musical staff in bass clef with a 4/4 time signature. It contains ten measures of eighth notes: F, G, A, B, C, D, E, F, G, A. There are whole rests in the second, fourth, and sixth measures. Slurs are placed over the first four notes and the last four notes. The staff ends with a double bar line.

A musical staff in bass clef with a 4/4 time signature. It contains five measures of eighth notes: B, C, D, E, F. There are whole rests in the first and third measures. Slurs are placed over the first two notes and the last two notes. The staff ends with a double bar line.

## Chorale

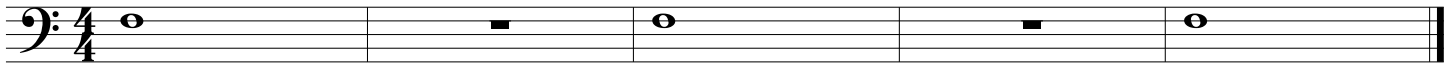
A musical staff in bass clef with a 4/4 time signature. It contains six measures of half notes: F, G, A, B, C, D. Slurs are placed over the last two notes. The staff ends with a double bar line.

A musical staff in bass clef with a 4/4 time signature. It contains six measures of half notes: E, F, G, A, B, C. Slurs are placed over the first two notes and the last two notes. The staff ends with a double bar line.

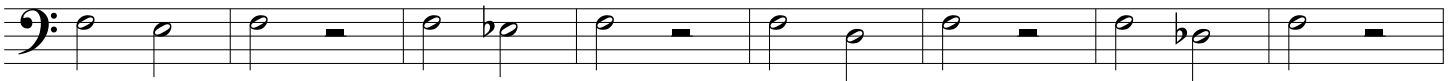
EUPHONIUM

# Ensemble Development

Concert F



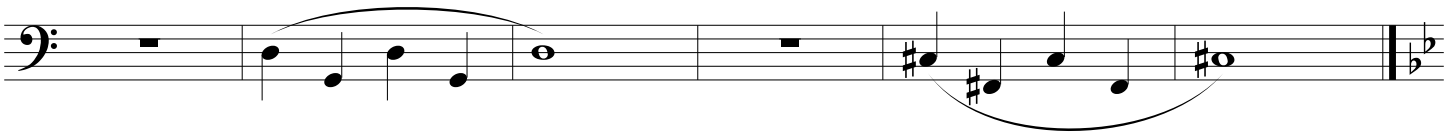
Long Tone 1A



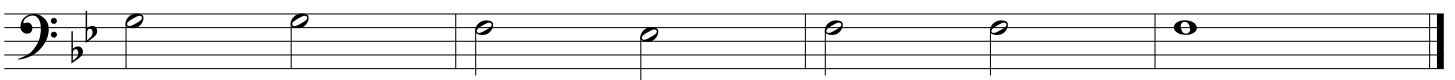
Long Tone 1C



Warm Up Set 1



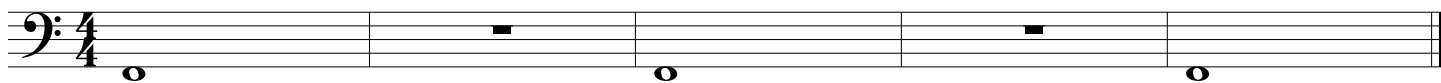
Chorale



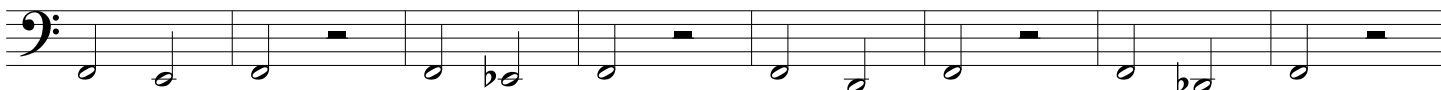
TUBA

# Ensemble Development

Concert F



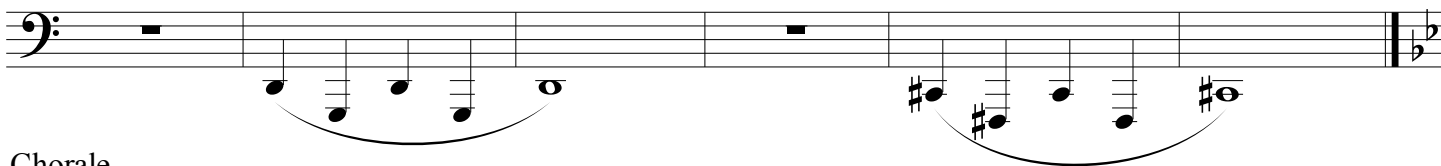
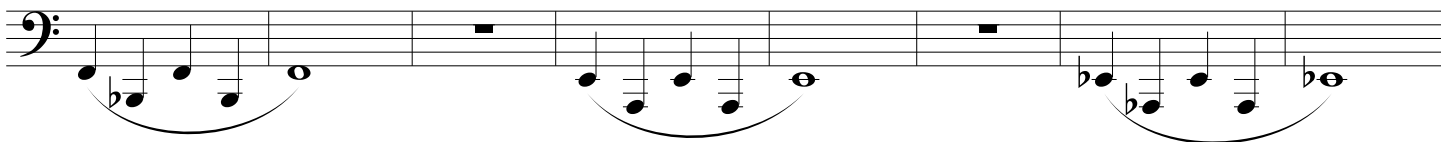
Long Tone 1A



Long Tone 1C



Warm Up Set 1



Chorale

